



NOVA SOUTHEASTERN
UNIVERSITY

Fort Lauderdale, Florida



Own Your Future with the NSU EDGE



Everything you imagined and more in a COLLEGE EXPERIENCE!

17 
NCAA Division II athletic teams

Diverse student body from

100+ 
countries



4,500 undergraduate students



17 student average class size

235  research projects currently underway with **\$96** million in external funding



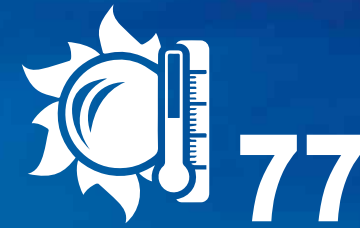
50+ undergraduate degree programs



7,000 approximate number of degrees conferred annually



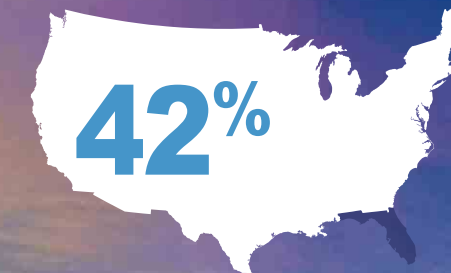
99% of campus students join activities, clubs and organizations



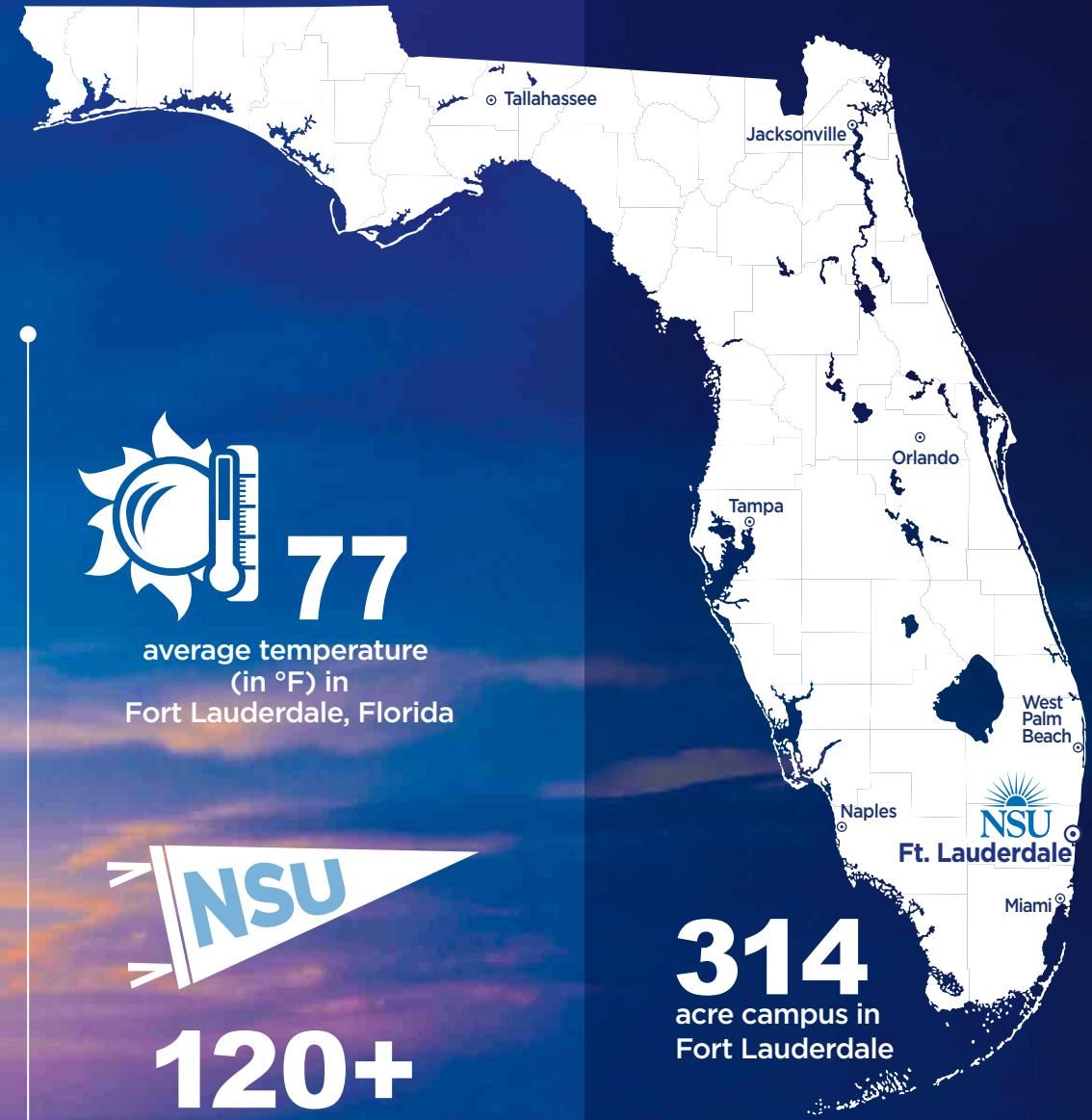
77 average temperature (in °F) in Fort Lauderdale, Florida



120+ clubs and organizations



42% of students from outside the state of Florida



314 acre campus in Fort Lauderdale

TABLE OF CONTENTS

- Shark Academics 2
- Undergraduate Programs 4
- Graduate Programs 6
- Premier Programs 8
- Academic Highlights 11
- Living on Campus 14
- Join the Shark Frenzy 16
- Shark Engagement and Involvement 18
- Shark Athletics..... 20
- Admission Priority Dates and Application Options 23
- Financial Aid 24
- Scholarships 24
- South Florida Living 26
- Campus Map 29
- Campus Visit 30
- Student Profile 32



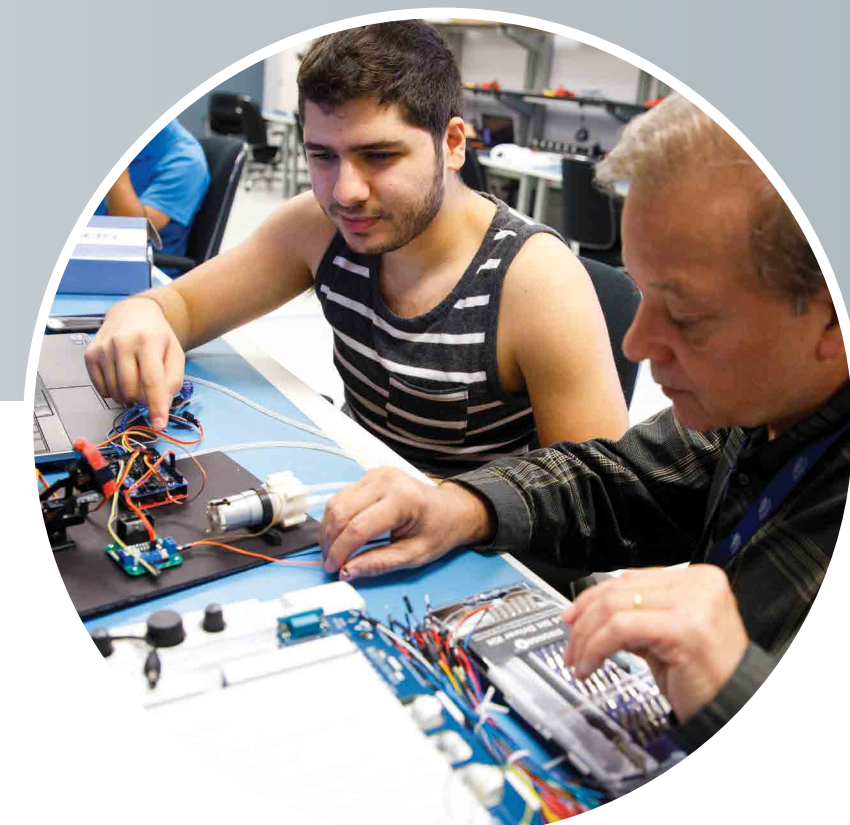
SHARK Academics



SMALLER CLASSES BIGGER RESULTS

THE HEART AND SOUL OF NSU

is our academic power. The university has earned a worldwide reputation for the quality of its more than 150 undergraduate and graduate degree programs. All of this academic strength is brought to you by exceptional, always-accessible faculty members who are committed to your success. They maintain an open-door policy when it comes to helping you, and the support NSU gives them to teach in new ways — in and out of the classroom and research lab — means that you're on a 21st century academic exploration, always grounded in real-world experience and focused on outcomes.



72%

of classes have fewer than 20 students



Undergraduate Programs at NSU

NOVA SOUTHEASTERN UNIVERSITY lets you explore an almost limitless range of academic paths. The best thing you could do is put yourself in a place where you'll be exposed to as many options as possible. And, that's the beauty of NSU. For the most up-to-date list of majors, visit nova.edu/academics.



College of Arts, Humanities, and Social Sciences

Explore diverse cultures; study political, social, and legal systems; sharpen your analytical mind; and expand your understanding of the performing and visual arts.

- Art and Design
- Communication
- Dance
- English
- General Studies
- History
- Human Development and Family Studies
- International Studies
- Legal Studies
- Music
- Paralegal Studies
- Philosophy
- Political Science
- Sociology
- Theatre

Halmos College of Natural Sciences and Oceanography

Get your feet wet at the College's Guy Harvey-supported marine research labs and marina. Conduct medical, conceptual, lab, and field research alongside faculty statisticians, chemists, biologists, and environmental scientists.

- Biology
- Chemistry
- Environmental Science/Studies
- Marine Biology
- Mathematics

College of Psychology

Study the complex relationship between the brain and behavior through lab, field, and clinical research experiences with faculty mentors, mental health practitioners, and human behavior analysts.

- Behavioral Neuroscience
- Psychology

Abraham S. Fischler College of Education

Prepare for teaching opportunities in more than 30 states. Gain hands-on access to a wealth of education models, including NSU University School (JK-Grade 12) and the renowned Mailman Segal Center for Human Development (which includes young learners with autism spectrum disorders).

- Criminal Justice
- Elementary Education with ESOL and Reading Endorsement
- Exceptional Student Education with ESOL Endorsement
- Human Services Administration
- Recreational Therapy (*online only*)
- Secondary Biology Education
- Secondary English Education with ESOL Endorsement
- Secondary Math Education
- Secondary Social Studies Education

H. Wayne Huizenga College of Business and Entrepreneurship

Learn from leaders who have reached the top of the corporate ladder. Faculty members share knowledge gained from their professional successes (and challenges), as you build a portfolio of skills and networking resources to prepare you for tomorrow's marketplace.

- Accounting
- Entrepreneurship
- Finance
- Management
- Marketing
- Sport and Recreation Management

College of Engineering and Computing

Join our national center for cybersecurity. Incorporate the capabilities of a supercomputer into your studies. Sharpen your programming, app-creating, troubleshooting, code writing, and software development skills for high-demand career opportunities across all industries.

- Computer Science
- Engineering
- Information Technology

Ron and Kathy Assaf College of Nursing

Whether you're entering or advancing your health-care services career, you will benefit from the nursing program's interdisciplinary approach. The emphasis on teamwork and collaboration will prepare you to serve as a leader in various professional environments and meet the health-care needs of your community.

- Entry Level Nursing*
- R.N. to B.S.N.**
- R.N. to M.S.N.**

**prerequisites are required prior to entering the major - first-year students complete prerequisites through the General Studies major before applying for Entry Level Nursing*

***available only to transfer students*

Dr. Pallavi Patel College of Health Care Sciences

Advance your research, industry, academic, or field-based career through a degree program focused on your passion in the health-care sciences. Exceptional facilities, access to clinics and internships, and hands-on training give you the advantage of real-world, professional practice.

- Cardiovascular Sonography*
- Exercise and Sport Science
- Health Science (*online only*)**
- Medical Sonography*
- Respiratory Therapy*
- Speech-Language and Communication Disorders

**prerequisites are required prior to entering the major - first-year students complete prerequisites through the General Studies major before applying for program*

***available only to transfer students*

Dr. Kiran C. Patel College of Osteopathic Medicine

Set your goal toward a future in one of the most in-demand fields in health care. Work closely with faculty as they provide expertise in areas relevant to public health, such as global health, social and behavioral health sciences, epidemiology, environmental and occupational health, and health-care systems.

- Human Nutrition
- Public Health

Pre-Professional Programs

NSU provides an excellent foundation of study and research opportunities to support students who plan to earn their professional degrees in medicine, law, and many other areas.

- Pre-Dental
- Pre-Law
- Pre-Med (M.D. or D.O.)
- Pre-Optometry
- Pre-Pharmacy
- Pre-Physical Therapy
- Pre-Veterinary



Ranked Among Top 200 Best Colleges by U.S. News & World Report





Preparing for success
**BEYOND
THE
CLASSROOM**

Graduate Programs at NSU

NOVA SOUTHEASTERN UNIVERSITY is uniquely positioned to provide our undergraduate students with a preview of NSU graduate programs and the nearly limitless range of resulting careers. As an undergraduate student, you'll have opportunities to participate in internships, clinical experiences, practicums, and research, allowing you to apply what you learn in the classroom and gain firsthand experience.



Graduate Program HIGHLIGHTS

We are proud of our graduate programs and our successful alumni in many fields including medicine, law, business, psychology, education, optometry, dentistry, computer science, oceanography, and pharmacy.

- Employers recognize the value of an NSU education, and our graduates are highly sought after by industry leaders and global businesses.
- NSU's College of Dental Medicine and Dr. Kiran C. Patel College of Osteopathic Medicine are among the most selective schools in the United States.
- NSU is pursuing LCME accreditation to offer the M.D. degree and would be the only university in Florida to award M.D. (Dr. Kiran C. Patel College of Allopathic Medicine) and D.O. (Dr. Kiran C. Patel College of Osteopathic Medicine) degrees.
- NSU's Halmos College of Natural Sciences and Oceanography is home to the only facility in the nation dedicated to coral reef ecosystems research.
- Passing rates on the pharmacy licensing exams for NSU's College of Pharmacy graduates exceed the national pass rate at near or above 90 percent.
- NSU offers four master's degrees and three Ph.D. programs in computer and information sciences.
- NSU's Abraham S. Fischler College of Education boasts an alumni network of over 65,000 consisting of superintendents, principals, teachers, and leaders across the globe.
- NSU boasts the only College of Optometry in the state of Florida.
- NSU is ranked fifth in the U.S. for the largest number of minority graduate degree recipients (including Hispanic and African American students).
- NSU delivers valuable medical, psychological, and legal services to the community and has been featured for its educational outreach to seniors.
- NSU's Dr. Pallavi Patel College of Health Care Sciences is the top educator of physician assistants regionally and nationally, with a 20-year track record of graduates consistently surpassing the national average in high, first-time national certification exam pass rates.
- NSU is home to the largest M.B.A. and accounting programs in Florida.
- NSU offers the only doctoral program in conflict analysis and resolution in Florida.
- NSU's College of Dental Medicine is the leader in educating dentists to provide dental care to children with autism spectrum disorder.





Premier PROGRAMS

DUAL ADMISSION PROGRAM

NSU pioneered the Dual Admission Program for a select group of highly qualified and motivated students who have maintained a laser focus on their career goals from early in their academic pursuits. As a Dual Admission student, you're reserved a seat in one of NSU's graduate or professional schools while you earn your bachelor's degree. In today's competitive world, that's like getting a head start on the rest of your life.

Visit nova.edu/dual for information on each Dual Admission Program's specific requirements.

Health and Medical Professions

- Doctor of Audiology (Au.D.)
- Doctor of Dental Medicine (D.M.D.)
- Doctor of Optometry (O.D.)
- Doctor of Osteopathic Medicine (D.O.)
- Doctor of Pharmacy (Pharm.D.) and Doctor of Philosophy in Pharmacy (Ph.D.)
- Doctor of Physical Therapy (D.P.T.)
- Master of Health Science in Anesthesiologist Assistant (M.H.Sc.)
- Master of Medical Science in Physician Assistant (M.M.S.)
- Master of Occupational Therapy (M.O.T.)
- Master of Science in Athletic Training (M.S.A.T.)
- Master of Science in Speech-Language Pathology (M.S.)

Business

- Master of Accounting
- Master of Business Administration (M.B.A.) with concentrations in:
 - Business
 - Business Intelligence/Analytics
 - Complex Health Systems
 - Enterprise Informatics
 - Entrepreneurship
 - Finance
 - Human Resource Management
 - International Business
 - Management
 - Marketing
 - Process Improvement
 - Supply Chain Management

Computer Science

- Master of Science in Computer Science (M.S.)

Humanities and Social Sciences

- Master of Arts in Composition, Rhetoric, and Digital Media (M.A.)
- Master of Arts in Cross-Disciplinary Studies (M.A.)
- Master of Science in College Student Affairs (M.S.)
- Master of Science in Conflict Analysis and Resolution (M.S.)
- Master of Science in Criminal Justice (M.S.)
- Master of Science in Family Therapy (M.S.)
- Master of Science in National Security Affairs (M.S.)

Law

- Juris Doctor (J.D.)

Oceanography

- Master of Science in Marine Science (M.S.)

Psychology

- Doctor of Philosophy in Clinical Psychology (Ph.D.)
- Doctor of Psychology in Clinical Psychology (Psy.D.)
- Doctor of Psychology in School Psychology (Psy.D.)
- Specialist in School Psychology (Psy.S.)

Dominate with the

NSU EDGE

PREMIER PROGRAMS

- Dual Admission
- Razor's Edge Scholars Programs
- The Fischler Academy
- Farquhar Honors College
- Shark Preview Weekends

ACADEMIC HIGHLIGHTS

- Research
- Study Abroad
- Experiential Learning
- Career Development

NSU graduates earn
\$12,000
 annually more than other
 college graduates*

* U.S. Department of Education
 national average scorecard

RAZOR'S EDGE SCHOLARS

nova.edu/razorsedge

Getting a competitive edge

Nova Southeastern University offers six academic tracks — **Global, Leadership, Research, Shark Cage, Shark Talent, and Shark Teach**. These four-year residential programs combine curricular and cocurricular experiences intended to capture the unique interests and talents of prospective and current students. Students who complete a specific program will earn an academic minor that will be on their official NSU transcript. In return for their participation, students are awarded a renewable scholarship.

GLOBAL—for students with a strong interest in global issues, international relations, global leadership, and cross-cultural understanding

LEADERSHIP—for students who are highly involved in their high school and or local community with a demonstrated track record of leadership roles and success

RESEARCH—an opportunity for students with a strong interest in research, scholarship inquiries, program solving, and the desire to work hands-on with today's research projects



SHARK CAGE—similar to the popular television show Shark Tank, this program is for students who are interested in developing and launching a business that will benefit the greater university

SHARK TALENT—for those students who are active in community or high school arts programs and who are passionate about using the arts to bring people together

SHARK TEACH—for students who are motivated to contribute to the field of education by increasing learner achievement and impacting educational outcomes

THE FISCHLER ACADEMY | nova.edu/fischleracademy

Make your mark on the world as a teacher leader



The Fischler Academy is a '3+1' combined bachelor's and master's degree program that incorporates cutting-edge teaching strategies, a mastery-based curriculum, and an active learning environment. Graduates from The Fischler Academy enjoy the benefit of a guaranteed job offer from some of Florida's largest school districts.

Designed for first-time-in-college students who wish to become teacher leaders in four years, students graduating from The Fischler Academy will have the skills and experience to thrive in the 21st century classroom.

While enrolled in The Fischler Academy, students are rewarded with a renewable scholarship, receive valuable leadership opportunities, and enjoy free international travel experiences.

FARQUHAR HONORS COLLEGE | honors.nova.edu

Expanded learning opportunities to challenge your mind

The Farquhar Honors College is ideal for high-achieving students seeking a supportive, inspiring community of scholars that will challenge their minds far beyond the classroom.

As an honors student, you'll enroll in specially designed, multidisciplinary honors courses and participate in unique opportunities to develop your leadership potential on campus and in the community.

The college provides well-rounded, enriching education experiences to advance your personal and professional goals through exclusive honors perks, including:

- Enhanced faculty mentorship
- Thesis guidance
- Special recognition at commencement
- Access to visitors from the Distinguished Speaker Series
- Additional scholarship support and resources

SHARK PREVIEW WEEKENDS

Interested in an NSU Premier Program: Dual Admission, Razor's Edge Scholars, Farquar Honors College, or The Fischler Academy?

There are a couple of additional steps to complete the process:



The Premier Programs require a supplemental application and interview (in addition to your University admission application), which can be found at nova.edu/sharkpreview



Attend a Shark Preview Weekend!

Making the decision about where to attend college is all about the proper fit — finding the right college, the right program, the right scholarships, and the right atmosphere that matches you as a student.

Shark Preview Weekends give you the opportunity to experience firsthand how NSU will prepare you to meet your future goals.

- While visiting NSU during a Shark Preview Weekend, students will interview for the Premier Programs to which they have applied.
- Students who are selected to interview for the full-tuition President's Scholarship will interview during the same Shark Preview Weekend

Consideration for the President's Scholarship is by invitation only.

Academic HIGHLIGHTS

RESEARCH

Learn by doing and achieving results

NSU strives to add another dimension to your educational experience by providing research opportunities outside of the classroom. It's the perfect opportunity to try something you have always dreamed of doing. Or never dreamed you would do. Take a few chances. Who knows? You might discover something amazing.

From the very beginning, NSU has embraced science and technology to enhance the educational experience. Today, aided by nearly \$96 million in external funding, NSU researchers are at the leading edge of scientific breakthroughs on many fronts. More than 200 research projects are currently underway, including anti-cancer therapies, coral reef restoration, stem cell therapies, and wildlife DNA forensics.

NSU's Center for Collaborative Research (CCR) is one of the largest and most advanced research facilities in Florida. The revolutionary 215,000-sq. ft., six-story facility is equipped with wet and dry labs, state-of-the-art core facilities and equipment, access to a high-performance computing environment and is home to some of the world's most accomplished researchers.

Nearly
\$96
million in externally funded
research projects





STUDY ABROAD

nova.edu/studyabroad

The World is our Classroom

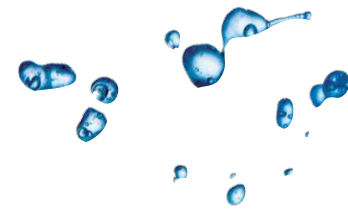
Classrooms are great, but sometimes, you just have to get out into the real world and see things for yourself. NSU's extensive, field based, travel-study opportunities offer an unparalleled exposure to the real world, all over the world. Students have recently documented the cultural geography and ecology of Madagascar, Belize, and Kenya; learned the law in Cambridge, England; explored ecotourism in East Africa; studied endangered species in Ecuador; lived on an island on Australia's Great Barrier Reef; and more. If traveling is what you are looking for, NSU's Office of International Students and Scholars will help you coordinate your pathway to studying abroad.

EXPERIENTIAL LEARNING

nova.edu/exel

Gaining diverse, meaningful experiences as an NSU student might be the most valuable part of your college education.

Through Experiential Education and Learning (ExEL) and the First-Year Experience at NSU, you will be exposed to a world of hands-on opportunities that enrich your academic life while helping you reach your professional and personal goals. As part of ExEL, you can choose to conduct research with a faculty mentor, enroll in courses that take you far beyond the classroom, test drive your future career with an internship, give back to your community as a volunteer, or earn credits while studying and exploring abroad.



1,000+
internship opportunities
every year

CAREER DEVELOPMENT

nova.edu/career

If you are looking to gain a competitive advantage over other college graduates and be world-ready, the Career Development Office at NSU is here to assist you. Every student receives their own personal Career Advisor who will support you during your undergraduate college experience to reach your individual career goals. To support every student, the office provides: career coaching, internship/job search action plan, cutting edge career technology and resources. With every student's career path being unique, NSU's Career Development Office provides you with services to foster and develop the skills needed to reach your future career goals.



DID YOU KNOW?

NSU is one of 50 universities in the nation with both the Carnegie classification of high research activity and community engagement.

Recent Contributions of NSU Researchers Include:

- the discovery of a molecule that can help battle breast, ovarian, prostate, lung, and colorectal cancers
- a revolutionary method to make pills tamper-proof so they cannot be crushed or liquefied
- a patented fall prevention model that predicts the likelihood of a person falling based on medication dosage and other factors
- underwater mapping that has redirected shipping patterns to avoid threatened coral reefs
- new links between dietary supplements and behavior in children with autism
- the longest tracked tiger shark on record to monitor migration patterns and prompt fisheries managers to re-evaluate how best to protect this near-threatened species



Living on CAMPUS

Your home AWAY FROM HOME

The NSU community is a safe, friendly, supportive place to live, learn, and play. And when it comes to living, NSU's modern residence halls put you in the center of everything.

For many of you, this will be your first time away from home, and on-campus living is a part of the college experience. You'll meet new people from all over the world, and you'll make lasting friendships that will define your life. Residence halls at NSU are spacious, secure, and convenient. You'll be close to the Don Taft University Center recreation fitness complex, to on-campus dining, and, of course, to all of your classes. All residence halls offer free utilities, including Wi-Fi, cable, and laundry. And, every room features a private bathroom.

Visit nova.edu/housing for more information about living on campus



NEW
*Upperclassman,
Apartment-Style
Residence Hall
Opening
Fall 2019*

FLOOR PLAN OPTIONS FOR FIRST-YEAR STUDENTS



THE COMMONS
Residence Hall Suite



LEO GOODWIN SR.
Residence Hall Triple Room





Join the **SHARK FRENZY**

Life on campus at Nova Southeastern University is like nothing you have ever experienced. You'll be amazed at the many things we have to offer, like modern and comfortable residence halls, the amazing Don Taft University Center, NCAA Division II sports, an abundance of student activities, convenient on-campus dining, hangouts like Starbucks and Einstein Bros. Bagels, plus a close-knit campus community where people welcome you with open arms.

You get all this, plus the sunny South Florida lifestyle, which means you'll be able to enjoy everything the great outdoors has to offer. Of course you're only a 15-minute drive from the beach. But there's always something to do on campus, too — like the annual Anything That Floats Raft Race, CommunityFest, homecoming week activities, and NCAA Sharks athletics events.

Sound great? What are you waiting for? It's time to make NSU your home. We know it will be one of the best times of your life, and a time you'll look back on with great memories.



SHARK ENGAGEMENT AND INVOLVEMENT

Clubs and Organizations

Opportunities abound to make friends, get involved in organizations and clubs (more than 100 to choose from), play intramural sports (flag football, dodgeball, bowling, badminton, racquetball, basketball, volleyball, ultimate Frisbee, golf, tennis, soccer, softball, and more), join a pre-professional society to kick start your résumé, and volunteer for community projects (helping others is a tradition at NSU). It all begins with meeting other students and faculty members during the helpful New Student Orientation program. From then on, whether it's pledging a fraternity or sorority; being a leader in student government; taking yoga, kickboxing, or Pilates classes; or just hanging out with your friends at the Flight Deck Pub, you will be welcomed into NSU's caring and supportive university community.

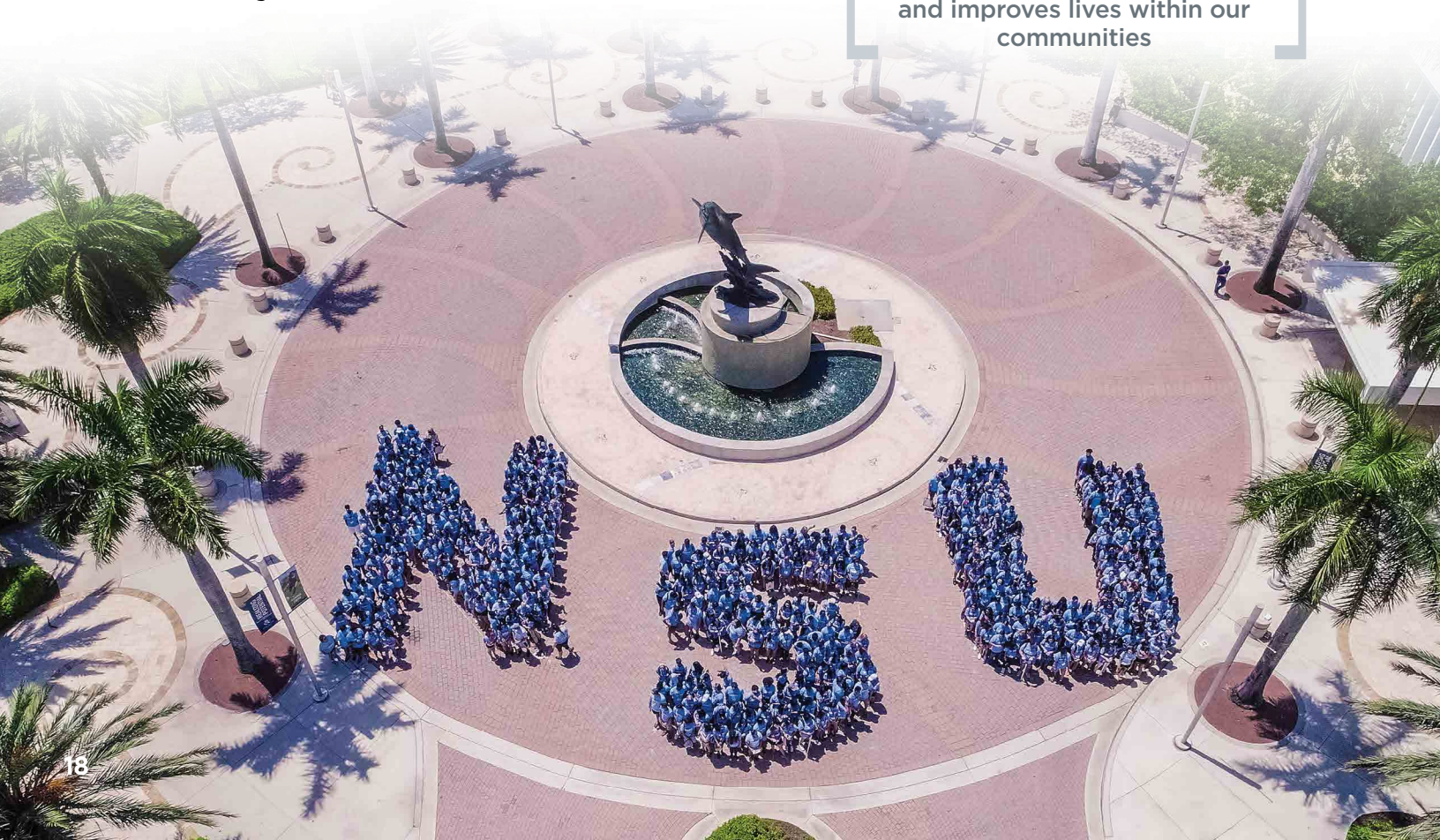
NSU has all the elements of a classic, traditional college.

Visit nova.edu/student-life for more information on clubs and organizations.



2,000+

activities annually help others and improves lives within our communities



SHARK STRENGTH Wellness made simple at NSU

At NSU, being fit is defined in mind, body, and spirit. And we have everything on campus to ensure you keep in top shape as you make the transition to college life. Fitness opportunities are abundant with Campus Recreation. Make a splash with aquatics classes. Go running with the Land Sharks. Compete in intramural sports. Learn a new hobby with instructional programs like scuba or golf. Use modern fitness equipment, get personal training, or take group exercise classes.

Visit rec.nova.edu for more information.



FINS FOOTBALL

Nova Southeastern University has teamed up with the Miami Dolphins for a one-of-a-kind partnership, which allows current NSU students to attend all Miami Dolphins home games for **FREE**.

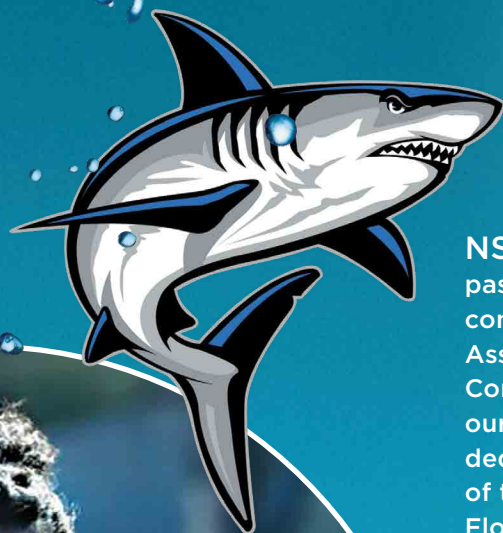
In addition to student access to Dolphins home games, this expanded partnership includes access to internships for students, career development panels, and community service collaborations.

And what's football without tailgating? NSU students will also get to experience high energy tailgating at NSU's Shark Village at the Hard Rock Stadium.

Students may learn more about FINS Football and be a part of the excitement by visiting nova.edu/finsfootball.



Jump into the SHARK TANK



NSU IS HOME to national champions, All-Americans, a past Olympian, and professional athletes. The NSU Sharks compete in Division II of the National Collegiate Athletic Association (NCAA) as members of the Sunshine State Conference. Offering 17 intercollegiate athletics programs, our student-athletes enjoy a winning edge thanks to dedicated coaches and athletic training staff members; some of the best baseball, softball, and soccer facilities in South Florida; an Olympic competition pool; and, of course, The Rick Case Arena (a thundering, 4,500-seat arena in the heart of the Don Taft University Center). And, they all explode into a frenzy when the Sharks come alive.

The NSU Athletics Department prides itself in not only athletics excellence, but also academic excellence. Since joining the NCAA in 2002, NSU student-athletes have maintained greater than 3.0 GPAs, on average, and more than 150 student-athletes have won Scholar All-American awards. Sharks Baseball won the NCAA Division II National Championship in 2016, and has three former players currently in the MLB. In total, the NSU athletics programs have won eight Division II National Team Championships, 20 individual championships, and 61 conference championships.

Visit nsusharks.com for more information.



You're either a Shark, or you're Bait!

HOW WE SUIT UP

MEN'S SPORTS

- Baseball
- Basketball
- Cross Country
- Golf
- Soccer
- Swimming
- Track and Field

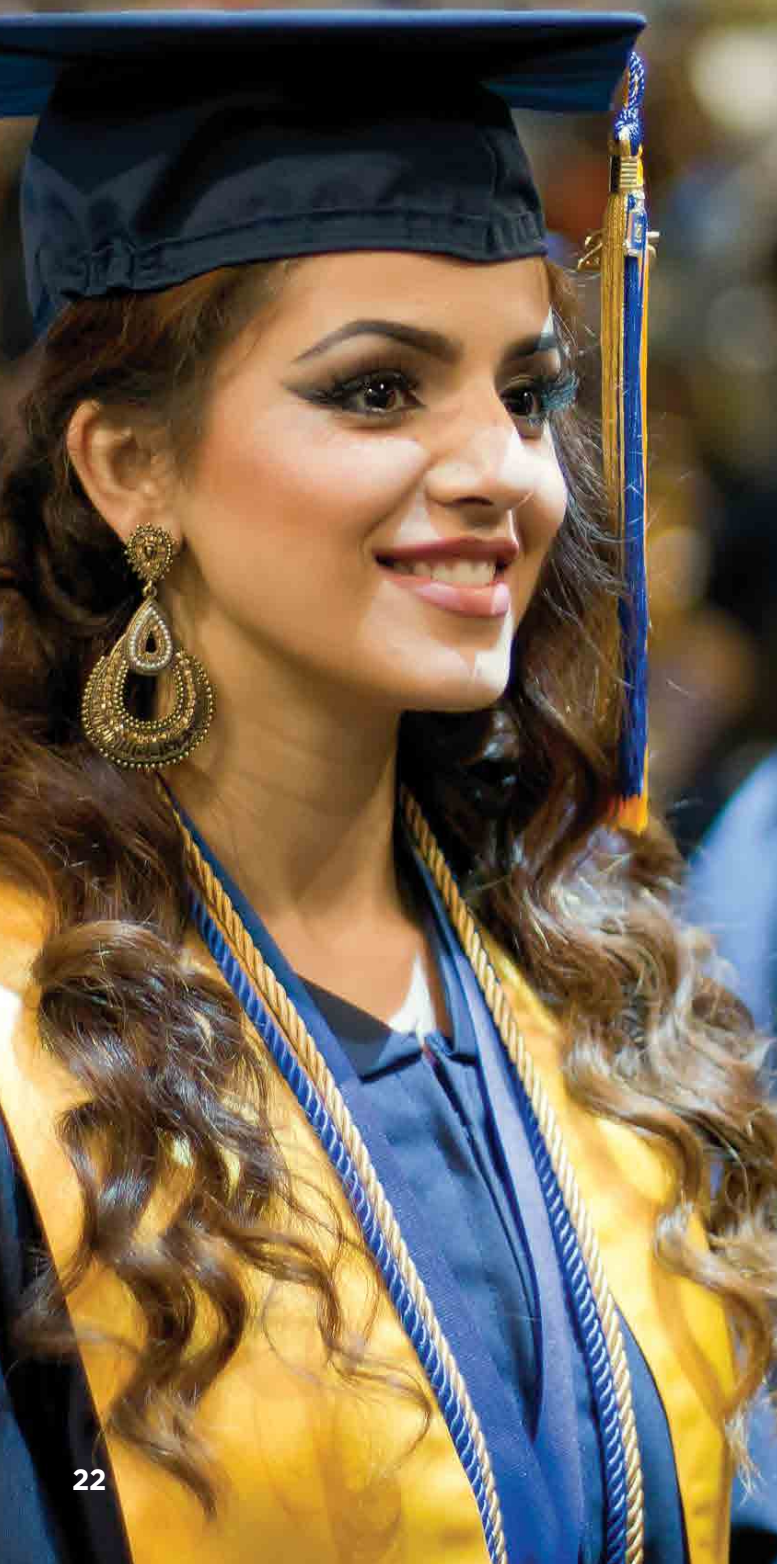
WOMEN'S SPORTS

- Basketball
- Cross Country
- Golf
- Rowing
- Soccer
- Softball
- Swimming
- Tennis
- Track and Field
- Volleyball



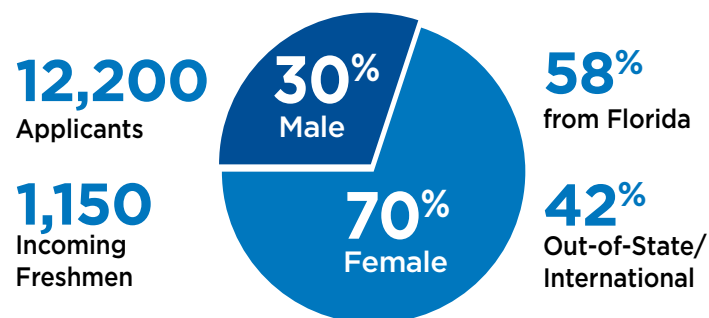
NCAA Division II National Championship 2016

- Admissions
- Financial Aid
- Scholarships



THERE'S NO WAY AROUND IT, applying to college can be overwhelming, but NSU will be with you every step of the way. To us, you're more than a test score or GPA. You're an individual who is about to bring something new and unique to campus. So let us help you get to that future you keep dreaming about.

Freshman Class Profile Entering FALL 2018



2018 Entering Class ACADEMIC PROFILE

A-/B+ overall grade point average

Mid-Range Test Scores
 SAT: **1070-1290** (Combined)
 ACT: **22-28** (Composite)

Transfer Class Profile Entering FALL 2018

1,650 Applicants

3.1 Average Transfer GPA:

350 Incoming students

Admission Priority Dates and APPLICATION OPTIONS

NOVEMBER 1 PRIORITY DATE:

Early Decision: Binding decision option for students 100% committed to attending NSU. You may only apply Early Decision to one college/university. If you are accepted to NSU as an Early Decision applicant, you will be expected to withdraw your applications to all other colleges/universities and commit to attending NSU.

Early Action: An early, non-binding decision option. Students who apply early action are typically very serious about attending NSU but have until May 1 to make a final enrollment decision and submit their enrollment deposit.

FEBRUARY 1 PRIORITY DATE:

Regular Decision: A non-binding decision option. Students who are admitted have until May 1 to make a final enrollment decision and submit their enrollment deposit.

Application Instructions:

You may apply using the NSU Shark Select Application (nova.edu/apply) or the Common Application (commonapp.org). A nonrefundable, \$50 application fee is required for either the NSU Shark Select Application or the Common Application.

1. Complete and submit the **NSU Shark Select Application** or the **Common Application** (choose one or the other). Nova Southeastern University has an optional essay. Applicants who choose to submit an essay will choose one of the five prompts provided on the Common Application or an original writing sample of their choice if using the NSU Shark Select Application.
2. Your counselor can submit your transcript and recommendation either electronically through Naviance, SendEDU or the Common Application. One counselor or teacher recommendation is required. Additional recommendations are optional.
3. Submit your self-reported or official ACT or SAT score(s). Official test score reports should be submitted directly from the testing agency.
 SAT Code: 5514
 ACT Code: 6706
4. Complete the School Report if using the Common Application to apply. The School Report should be completed by your college or guidance counselor and is available on the Common Application website. Please have your counselor submit this report with your official transcripts and your school profile.
5. One letter of recommendation from a teacher is required, but you may submit up to a total of three letters. The letter can be found and completed online through the Common Application Teacher Evaluation form. In addition, you can submit the letter(s) in the supplemental items area of the NSU Shark Select Application. Paper letters of recommendation may be mailed to:

Nova Southeastern University Enrollment Processing Services (EPS)
 3301 College Avenue, P.O. Box 299000
 Fort Lauderdale, Florida 33329-9905

NSU's Premier Programs (Dual Admission, Razor's Edge, The Fischler Academy and Farquhar Honors College) require a supplemental application and an on-campus interview in addition to your University admission application. Application instructions can be found at nova.edu/sharkpreview.

INTERNATIONAL STUDENTS

International students can visit nova.edu/admissions/international-students for secondary school and English Language proficiency requirements.



Financial AID

Invest in YOUR FUTURE

When it comes to financing your Nova Southeastern University education, you are not alone. Our knowledgeable and supportive staff members will assist you with your financial aid planning so that you may realize your dream of attending a private university. Full-tuition scholarships are awarded to a select number of high-achieving students. Additionally, we offer need-based, non need-based, and merit-based support through state, federal, and university-sponsored aid.

FAFSA

To be considered for need-based financial aid, including grants and loans, you must complete the FAFSA, (Free Application for Federal Student Aid). The FAFSA is available online **October 1** and can be completed and submitted as you are completing your application for admission. NSU's FAFSA Code is 001509. Learn more about the **FAFSA** at fafsa.gov.

Scholarships

NSU offers a variety of scholarships based on academic achievement in and out of the classroom, leadership, and demonstrated financial need. Below, we have highlighted some examples of the outstanding scholarships at NSU.

Dean's Scholarship

All applicants are considered, and no separate application is required. Scholarships range from \$3,000 - \$17,000. The Admission Committee bases selection on academic achievement in the classroom as well as standardized test scores.

Razor's Edge Scholars

To be considered you must submit the Premier Programs application. All Razor's Edge Scholars will receive a \$22,000 scholarship; \$18,000 going toward tuition and \$4,000 toward campus housing.

President's Scholarship

The top candidates admitted to NSU will be invited to campus to interview for this scholarship.

Determination for interview invitations are made by the Admissions Committee and is based on outstanding academic achievement in the classroom and standardized test scores.

The President's Scholarship is full tuition.

Over **\$41** million
in academic scholarships
each year

State and Federal Grants

Grants are considered gift aid and do not need to be repaid. They can have need-based requirements, such as the Federal Pell Grant and the Federal Supplemental Educational Opportunity Grant.

Florida residents may be eligible for funds from the state of Florida, including Florida Bright Futures, Effective Access to Student Education (EASE) Grant (formerly FRAG), the Florida Student Assistance Grant, and students may also use Florida Pre-Paid towards cost of attendance at NSU.

To learn more, please visit nova.edu/financialaid.

Affordability

The value of an NSU degree grows with every graduating class and our successful alumni. The extraordinary level of personal attention, access to world-class resources, and dedication to the lifelong success of our students provided by NSU makes your education here an exceptional investment in your future.

Our Net Price Calculator (NPC) is an online tool that you may use to estimate the net price to attend NSU. The net price is the difference between the full cost of attendance and any grants, scholarships, and loans for which you may be eligible. We are confident that you will find that your education at NSU is well within reach. To use the NPC, go to nova.edu/npc.

Members of our financial aid staff are also available should you require more personal assistance. Contact them by calling (954) 262-3380 or 800-806-3680, or by emailing finaid@nova.edu.

Estimated Costs 2019-20

Tuition: \$31,150

Average Room and Board (including meal plan): \$10,300*

**Housing costs vary based on room type selected (double, triple)*





South Florida LIVING

Imagine wearing shorts and flip-flops year-round, taking trips to the beach, experiencing diverse cultures, and surrounding yourself with some of the best weather in the world. Sounds pretty good, doesn't it? Guess what? That's the place NSU calls home.

Between undergraduate and graduate programs, NSU offers more than 150 different degrees, but for some people, the degrees that matter most are found on a thermometer. So how does 77°F sound? That's the average temperature in South Florida. Which means, when you're not in class, you can be outdoors all year long.



Experience everything South Florida has to offer

- Hiking
- Biking • Fishing
- Boating
- Scuba diving
- Windsurfing
- Open-air festivals
- Concerts



For sports fans, there's FINS Football with the Miami Dolphins, baseball, basketball, and hockey



You can be on South Beach in Miami in about 30 minutes. In about three hours, you can be enjoying yourself at one of Orlando's theme parks or chilling in the Florida Keys



For foodies, there's everything from casual waterfront dives to world-class gourmet cuisine



23 miles of Atlantic Ocean beaches in Broward County



Fort Lauderdale Beach is 15 minutes to the east, and the Everglades are 15 minutes in the other direction



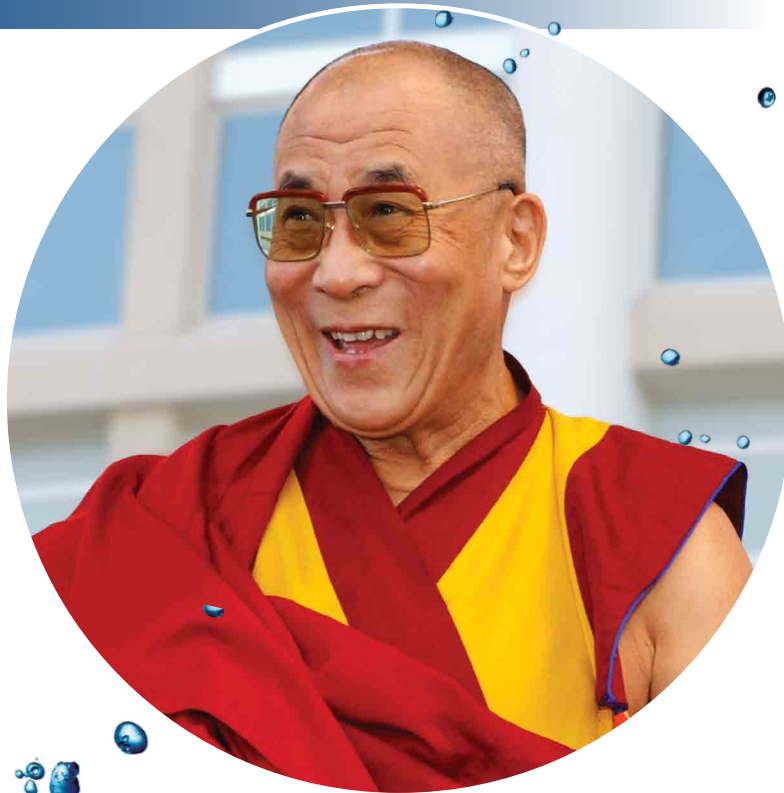
South Florida is a worldwide, tropical destination with direct flights in and out of Fort Lauderdale and Miami airports, both just a short drive from campus



CULTURE AND CAMPUS

Not Reality TV NSU REALITY

OVER THE YEARS, Nova Southeastern University has hosted everyone from movie stars to professional athletes, internationally recognized scientists, and Nobel Laureates. By bringing these distinguished guests to campus, the NSU community is enlightened and inspired by their professional accomplishments. Often, students have the additional opportunity of meeting these guests behind the scenes to learn more about their lives and perspectives. From Life 101 — our popular guest lecture series that showcases athletes such as the Daily Show's Trevor Noah, Sanya Richards-Ross, Jason Taylor, and Michael Phelps — to the NSU Distinguished Speaker Series, which has featured His Holiness the 14th Dalai Lama of Tibet, Junot Díaz, Desmond Tutu, and Jamaica Kincaid, the NSU campus is filled with opportunities to take learning to the next level.



A place for ART A place for PEOPLE

An integral part of the University's expanded campus, the NSU Art Museum Fort Lauderdale provides the best in visual arts exhibits and educational programs to South Florida. Founded in 1958 and having a collection of more than 6,000 works, the NSU Art Museum Fort Lauderdale has become one of South Florida's leading cultural attractions, with past exhibitions ranging from Diana: A Celebration to Tutankhamun and the Golden Age of the Pharaohs. The museum also offers community visual arts classes through the AutoNation Academy of Art and Design and hosts an active performing arts program, including Inside Out as its resident theater company. In addition, the highly regarded Artist in Residence Program broadens the sphere of conversation about contemporary art.

Visit nsuartmuseum.org for more information.



More than just a CAMPUS!

WE DON'T NORMALLY BRAG, but once you see our beautiful and tropical, 314-acre Fort Lauderdale Campus—with modern facilities and all the latest technology, you'll be hooked. Get a feel for the NSU campus with these images or go online at nova.edu/tour and check out our virtual tour. Better yet, come visit our campus and schedule a tour with a current student.



■ NSU recently broke ground on its newest upperclassman, apartment-style residence hall and parking garage, opening Fall 2019.

The new hall will feature:

- Queen-size beds
- Full-size kitchens
- Washers and Dryers
- Wood Plank Floors
- Innovative makerspace for Razor's Edge Shark Cage Scholars



**VISIT
CAMPUS**

Love at First BITE!

DO YOU BELIEVE IN LOVE AT FIRST SIGHT? Evidently, many of our students do. We've heard many times that once they've seen NSU's campus, they're hooked.

- Just 10 minutes from Fort Lauderdale/Hollywood International Airport and close to I-95, I-75, and Florida's Turnpike, it's not hard to get to NSU's 314-acre Fort Lauderdale Campus. But it's difficult to leave.
- We offer a variety of opportunities throughout the year for you to visit the NSU campus.
- You can also contact us for an admissions presentation and a student-guided campus tour. What better way to take in the whole South Florida lifestyle. For those up north, we recommend coming in winter (you'll thank us)!

Just tell us when you'd like to visit, and we'll do the rest! Go to nova.edu/undergraduate/visit-campus to schedule your campus visit.



Leaving a Legacy at NSU

PARKER SHEPPARD '18 was always committed to community service and being a leader among his peers during high school. He wanted to continue this strong tradition into higher education and soon learned Nova Southeastern University would be the ideal institution to help him achieve these dreams.

“ In my experience at NSU, you're not only receiving the opportunity to get a top-notch education, you also have the opportunity to form relationships with world-renowned researchers, build the university in a way that you want to see it in the future, and all the while, **you also have the opportunity to find your purpose and make something of it.** You get out of NSU what you put into it. That goes for everything in life, but sometimes all the resources that you may need are right in front of you, and that is what NSU provided me.

Early on at NSU, I found that I have a passion for teaching and being a mentor, but **I never would have realized it if it wasn't for my own mentorship from two of my professors,** who inspired and encouraged me to be curious and ask questions, which ignited my passion for learning.

My supervisor in the Office of Recreation and Wellness not only helped me with building a club swimming program from the ground up, but he also gave me life advice about things that I never knew I could consider. Both in and out of the classroom, if I ever showed that I wanted help or advice or anything of that nature, **the professors and staff at NSU would take the time to sit with me and figure it out, whatever "it" was.**”

PARKER SHEPPARD '18

- Exercise and Sport Science
- Razor's Edge Leadership Scholar
- Graduate student in Exercise Physiology at University of North Texas

CAMPUS INVOLVEMENT AT NSU:

MAKO Rangers Co-Founder, NCAA Swim Team, Fiji (Phi Gamma Delta), Club Sports Program Co-Founder, NSU Club Swim Team Founder, NSU Relay For Life, Admissions Ambassador, President's 64



One of Parker's proudest NSU legacies was founding the MAKO Rangers with his roommate. Standing for Monumental Action Through Kindness and Optimism, the MAKO Rangers raise money for childhood cancer awareness and bring a sense of joy and hopefulness to children by touring local hospitals in full Power Rangers attire.



A charismatic leader, Parker greeted many campus visitors as an admissions ambassador with a big smile while he shared his love for NSU with future Sharks.

Consistent with all federal and state laws, rules, regulations, and/or local ordinances (e.g., Title VII, Title VI, Title III, Title II, Rehab Act, ADA, Title IX, and the Florida Civil Rights Act), it is the policy of Nova Southeastern University not to engage in discrimination or harassment against any persons because of race, color, religion or creed, sex, pregnancy status, national or ethnic origin, nondisqualifying disability, age, ancestry, marital status, sexual orientation, gender, gender identity, military service, veteran status, political beliefs or affiliations, and to comply with all federal and state nondiscrimination, equal opportunity and affirmative action laws, orders, and regulations. Any such acts are unacceptable and strictly prohibited by the university.

In addition, the law prohibits retaliation against an individual for opposing any practices forbidden under this policy, for bringing a complaint of discrimination or harassment, for assisting someone with such a complaint, for attempting to stop such discrimination or harassment, or for participating in any manner in any investigation or resolution of a complaint of discrimination or harassment. This nondiscrimination policy applies to admissions, enrollment, scholarships, loan programs, athletics, employment, and access to, participation in, and treatment in all university centers, programs, and activities. NSU admits students of any race, color, religion or creed, sex, pregnancy status, national or ethnic origin, nondisqualifying disability, age, ancestry, marital status, sexual orientation, gender, gender identity, military service, veteran status, political beliefs or affiliations, and activities generally accorded or made available to students at NSU and does not discriminate in the administration of its educational policies, admission policies, scholarship and loan programs, and athletic and other school administered programs.

Nova Southeastern University is accredited by the Southern Association of Colleges and Schools Commission on Colleges to award associate's, baccalaureate, master's, educational specialist, doctorate, and professional degrees. Contact the Commission on Colleges at 1866 Southern Lane, Decatur, Georgia 30033-4097 or call 404-679-4500 for questions about the accreditation of Nova Southeastern University.



Office of Undergraduate Admissions

3301 College Avenue
Fort Lauderdale, FL 33314-7796

NONPROFIT ORG
U.S. POSTAGE
PAID
NOVA
SOUTHEASTERN
UNIVERSITY



ALVIN SHERMAN LIBRARY RESEARCH AND INFORMATION TECHNOLOGY

FOR ADDITIONAL INFORMATION
954-262-8000 • 800-338-4723
admissions@nova.edu

Follow us on our social media pages:

